

---

# TCP "Dual"

## EvoDECO

---

## Contents

1	Tornos Control Panel - EvoDECO .....	3
2	A bit of history .....	4
3	TISIS Optimove .....	5
4	The benefits for you.....	6
5	A smooth transition with the "Dual" solution.....	6
6	Interested? .....	7

## 1 Tornos Control Panel - EvoDECO

Are you the satisfied owner of an EvoDECO machine? Then this article is for you!  
Your EvoDECO machines are fitted with what is currently known as "TCP", or Tornos Control Panel.

In all likelihood, this TCP has a built-in PC and the famous TB-DECO programming software as well as the FANUC communication interface.

Tornos allows you to continue to evolve!



## 2 A bit of history

"DECO" kinematics has spanned several generations and to this day it is unrivalled in the cutting market.

At the outset, offering a programming solution for such a machine was a real challenge for Tornos.

This gave rise to TB-DECO.

Indeed, did you know that the design of this software dates back to 1990?

Yes, more than 30 years ago!



Human-machine communications are made via the famous FANUC interface which, we promise you, has not changed very much between the 1990s and the present day.



In the era of the smartphone and the ultra-connected world, Tornos felt it was time to give its iconic "EvoDECO" software state-of-the-art product programming and manipulation solutions.

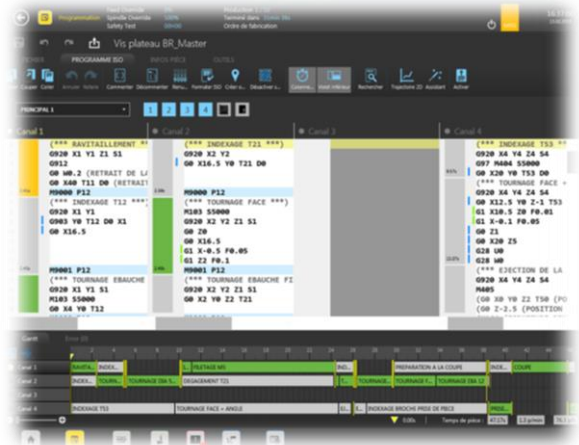
### 3 TISIS Optimove

Engineers at Tornos have been working on the development of TISIS Optimove for several years now. To date, the solution has been approved by several companies which operate in the cutting sector.

Tornos is now ready for a large-scale roll-out!

But what exactly is TISIS Optimove?

- 1) A programming software.  
It is the TISIS programming software, fitted with the PTO calculator just like TB-DECO.



- 2) A machine manipulation interface which replaces the FANUC pages called "TISIS Pilot".

*Don't worry!  
Do you know how to use your smartphone?  
Then you already know how to use TISIS Pilot!*



## 4 The benefits for you

What are the benefits compared with TB-DECO?

There are lots of them! Here are just a few:

- Modern design
- Improved ergonomics
- Easier programming
- Innovative machining processes
- Get up to speed quickly



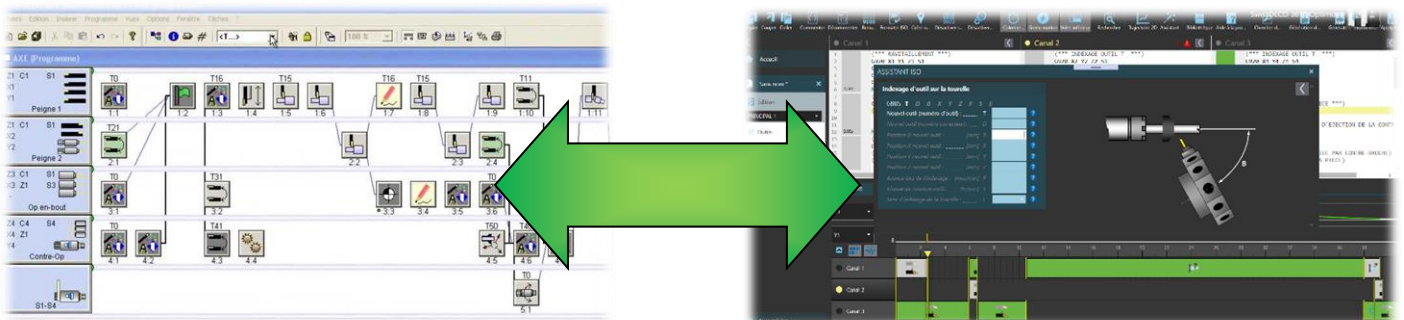
Just ask for a demonstration! Our experts will be delighted to introduce you to all of these features.

## 5 A smooth transition with the "Dual" solution

What is the "Dual" solution?

It is very simple: it means having one EvoDECO machine with both programming/manipulation systems loaded onto the same TCP.

At any time, you can easily switch from "TB-DECO" to "TISIS" and vice versa.



This offers a number of advantages:

- You can also use your old TB-DECO programs on the machine without having to redo them.
- You can create new programs in Optimove and enjoy all of its benefits
- You can get up to speed with the Optimove software at your own pace
- There is no need to train reluctant colleagues, they can continue to work in exactly the same way as before
- Simplify your recruitment processes.

You no longer need to worry about whether candidates come from an ISO or a TB-DECO background.

It is also easier to attract young talent who will enjoy working with cutting-edge software.

## 6 Interested?

If this interests you, it's very straightforward: when placing your next EvoDECO order, just ask for a "Dual" version.

You can also upgrade your existing machines. Just contact your Tornos distributor.

