
Gear Hobbing TISIS Optimove

Content

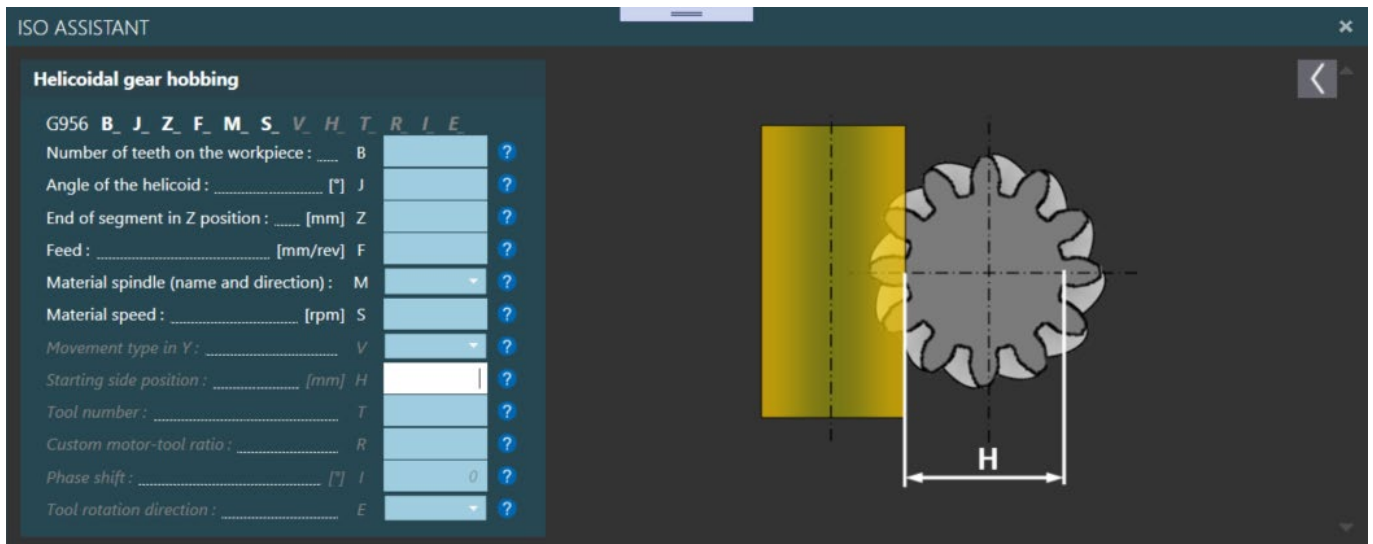
| | | |
|---|--|---|
| 1 | Programming your gear hobbing with ease! | 3 |
| 2 | Enabling gear hobbing mode with G952 | 4 |
| 3 | New perspectives with the G956 helical gear hobbing function | 5 |

1 Programming your gear hobbing with ease!

Your time-consuming gear hobbing programming tasks are now a thing of the past. TISIS Optimove allows you to program straight gear hobbing and helical gear hobbing with the utmost ease.

Two functions allow easy programming:

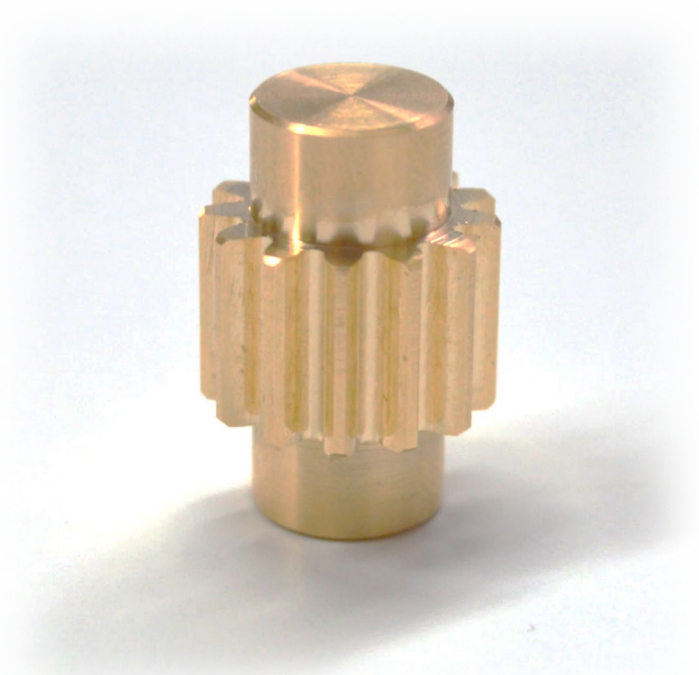
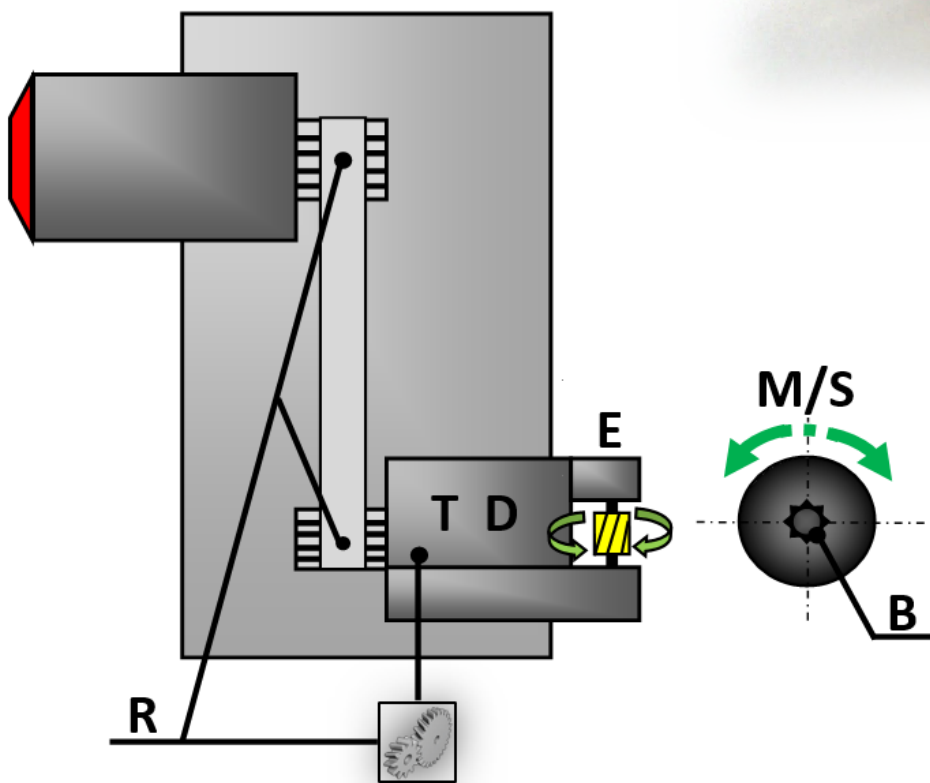
- G952: used to activate the gear hobbing mode and avoid any calculations
- G956: used for the machining of a helical gear hobbing



2 Enabling gear hobbing mode with G952

Function G952 enables the activation of the gear hobbing mode. This function automatically considers the transmission ratio between the motor and the tool and its direction of revolution.

Simply inform function G952 of the number of teeth desired on the part to perform the correct machining of the part.



3 New perspectives with the G956 helical gear hobbing function

You can go much further with Optimove.

Function G956 allows you to perform helical gear hobbing according to a chosen angle.

Depending on the type of milling cutter selected, you can generate the helix angle with or without movement on the Y axis.

